

# SPD

## 电涌保护器(电源类)

Surge Protective Device (Power)



SET safe | SET fuse

赛尔特

制造电路控制及安全保护元器件 提供电路安全解决方案  
Providing a Total Solution for High Standard Safety Circuit Protection

# WHAT

## CAN DO FOR YOU

赛尔特设计、制造、销售业界领先的**电路控制及安全保护元器件**、提供**电路安全解决方案**。

2000年成立于中国厦门。产品销往40多个国家和地区，与世界500强的部分企业有深远的合作，首创、独创多个产品；取得CCC、UL、cUL、VDE、TUV、PSE、KC等认证，符合RoHS、REACH，获得IATF16949、ISO9001、ISO14001、ISO45001、GB/T29490管理体系认证，参与多项电路保护元器件的国家、国际标准制定、修订。

赛尔特(SETsafe | SETfuse)产品的主要应用市场：通信、防雷器、电源、新能源、照明、家电、移动设备、医疗。

### MISSION

#### PROVIDING A TOTAL SOLUTION FOR HIGH STANDARD SAFETY CIRCUIT PROTECTION.

SETsafe | SETfuse was established in 2000 in Xiamen, China. We have a presence in more than 40 countries and regions recognising our products. Some of the world's 500 fortune companies are our valuable customers. We have pioneered, innovated & developed several products exclusively. Products are compliance with CCC, UL, cUL, VDE, TUV, PSE, KC, IATF16949, ISO9001, ISO14001, ISO45001, GB/T29490 certificates. We are in one of the core participating teams for revising and setting several national & international standards in the field of Circuit Protection.

SETsafe | SETfuse Key Markets: Telecom, Surge Protector, Power, New Energy, Lighting, Home Appliances, Mobile Devices, Medical.

### 过温保护 Over Temperature Protection

**ATCO**  
温度保险丝 Thermal-Link 1



**DC-ATCO**  
直流温度保险丝 Thermal-Link 2



**OTCO**  
温度保险丝 Thermal-Link 3

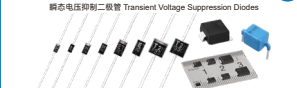


**TMS**  
热保护器 Thermal Protector 4




### 过电压保护 Over Voltage Protection


**TVS Diodes**  
瞬态电压抑制二极管 Transient Voltage Suppression Diodes 1




**GDT**  
气体放电管 Gas Discharge Tube 2




**MOV**  
压敏电阻 Metal Oxide Varistor 3



**TFMOV**  
热保护型压敏电阻 Thermal Fuse & MOV 4




**TFMOV**  
热保护型压敏电阻 Thermally Protected Varistors 5




### 过电压保护 Over Voltage Protection


**SPD-M**  
电涌保护模块 Surge Protective Device Module 6




**SPD**  
低压电源系统 Low-voltage Power Systems 7




**SPD**  
光伏供电系统 PV System 8



**SPD**  
室外照明系统 Outdoor Lighting 9



**SPD**  
信号通信系统 Signaling Networks 10



### 过电流保护 Over Current Protection

**Mini Fuses**  
小型熔断器 Miniature Fuses 1



**TRXF**  
热保护型熔断电阻器 Thermal-Link & Fusing Resistor 2



**TPR**  
热保护型熔断电阻器 Thermally Protected Resistor 3



**NTC**  
抑制浪涌电流NTC热敏电阻器 Inrush Current Limiting NTC Thermistor 4



**LV Fuses**  
低压熔断器 Low Voltage Fuses 5



### 主动保护 Active Protection

**iTCO**  
受控熔断器 Iode Thermal-Link 1



# 电涌保护原理 Surge Protection Principle



## 应用 Applications



机房配电柜  
Computer Room Cabinet



直流充电桩  
DC Charging Pile



光伏逆变器  
Photovoltaic Inverter



不间断电源  
Uninterruptible Power Supply (UPS)



户外一体化机柜  
Outdoor Integrated Cabinet



电气控制柜  
Electrical Control Cabinet

## 产品概述 Description

导轨安装电涌保护器根据UL 1449 第四版和 IEC/EN 61643-11的相关要求进行设计，具有热脱扣保护，失效指示和遥信触点等功能。具有不同保护模式的电涌保护器适用于低压配电系统，满足重要场所下的高可靠性要求。

Surge Protection Devices (SPDs) are designed to meet requirements of UL 1449 Forth Edition and IEC/EN 61643-11. They are DIN-rail mountable featuring a fail-safe protection, visual indicator and remote signal contact. SPDs for the different protection mode are available for low-voltage distribution system, which meets the requirements of high reliability in important field.

## SD25T系列产品特点 Features

符合UL 1449和IEC/EN 61643-11

Comply with UL 1449 and IEC/EN 61643-11

· T1+T2 电涌保护器 Surge Protection Device

可插拔模块

Pluggable Module

· 方便更换  
Easy for replacement

遥信

Remote Signaling

· 所有系列可选，用于模块失效遥信告警  
Optional in all ranges, for remote signaling of modular end of life



失效指示

Failure Indication

· 直观显示保护装置的寿命状态  
Visual indication of life status of the protection device



卡扣和模块机械锁设计

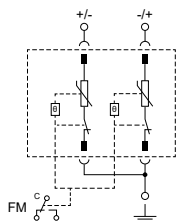
Clasp and Modular Locking Mechanism Design

· 模块紧固牢靠，不受振动影响  
The pluggable module is fastened and reliable, no vibration influence  
· 仅更换模块与接线时开启卡扣，避免正常运行情况下触及带电部件  
Only open the clasp when replacing the module and wiring, to avoid touching the live parts under normal operation

# 产品系列 Product Series

## 直流/光伏直流电涌保护器 DC / PVDC SPD

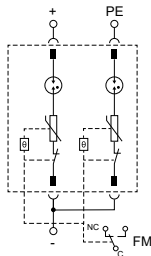
### SD25T



型号 Model	SD25T100L211PV	SD25T200L211PV
光伏应用最大连续工作电压 ( $U_{cav}$ ) Max. Continuous Operating Voltage for PV Application	180 VDC	250 VDC
标称放电电流 ( $I_n$ ) Nominal Discharge Current (8/20 $\mu$ s)	25 kA	25 kA
最大放电电流 ( $I_{max}$ ) Maximum Discharge Current (8/20 $\mu$ s)	50 kA	50 kA
冲击放电电流 ( $I_{imp}$ ) Impulse Discharge Current (10/350 $\mu$ s)	12.5 kA	12.5 kA
电压保护水平 ( $U_p$ ) Voltage Protection Level	1.0 kV	1.3 kV
保护模式 Protection Mode	+/- — PE	+/- — PE
SPD 类型 Type	EN 61643-31 Class I and Class II	

型号 Model	SD25T300L211PV	SD25T400L211PV	SD25T500L211PV	SD25T600L211PV
光伏应用最大连续工作电压 ( $U_{cav}$ ) Max. Continuous Operating Voltage for PV Application	330 VDC	450 VDC	550 VDC	670 VDC
标称放电电流 ( $I_n$ ) Nominal Discharge Current (8/20 $\mu$ s)	25 kA	25 kA	25 kA	25 kA
最大放电电流 ( $I_{max}$ ) Maximum Discharge Current (8/20 $\mu$ s)	50 kA	50 kA	50 kA	50 kA
冲击放电电流 ( $I_{imp}$ ) Impulse Discharge Current (10/350 $\mu$ s)	12.5 kA	11.0 kA	10.0 kA	7.5 kA
电压保护水平 ( $U_p$ ) Voltage Protection Level	1.5 kV	2.0 kV	2.1 kV	2.5 kV
保护模式 Protection Mode	+/- — PE	+/- — PE	+/- — PE	+/- — PE
SPD 类型 Type	EN 61643-31 Class I and Class II			

### SD20H

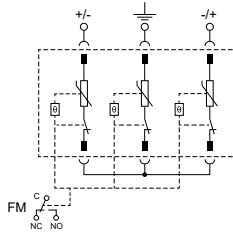


型号 Model	SD20H270A203-DC
标称系统电压 ( $U_n$ ) Nominal System Voltage	270 VDC
光伏应用最大连续工作电压 ( $U_{cav}$ ) Max. Continuous Operating Voltage for PV Application	300 VDC
标称放电电流 ( $I_n$ ) Nominal Discharge Current (8/20 $\mu$ s)	20 kA
最大放电电流 ( $I_{max}$ ) Maximum Discharge Current (8/20 $\mu$ s)	40 kA
电压保护水平 ( $U_p$ ) Voltage Protection Level	1.0 kV
保护模式 Protection Mode	+ — -, — PE
SPD 类型 Type	EN 61643-31 Class II

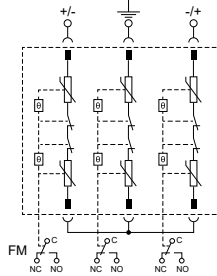
# 产品系列 Product Series

## 直流/光伏直流电涌保护器 DC / PVDC SPD

### SD25T



### SD25TS

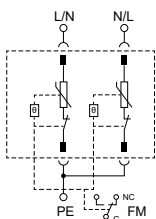


型号 Model	SD25T600L312PV	SD25T800L312PV	SD25T1000L312PV	SD25TS1500L312PV
光伏应用最大连续工作电压 ( $U_{SP}$ ) Max. Continuous Operating Voltage for PV Application	660 VDC	900 VDC	1000 VDC	1500 VDC
标称放电电流 ( $I_n$ ) Nominal Discharge Current (8/20 $\mu$ s)	25 kA	25 kA	25 kA	25 kA
最大放电电流 ( $I_{max}$ ) Maximum Discharge Current (8/20 $\mu$ s)	50 kA	50 kA	50 kA	50 kA
冲击放电电流 ( $I_{imp}$ ) Impulse Discharge Current (10/350 $\mu$ s)	12.5 kA	11.0 kA	10.0 kA	12.5 kA
电压保护水平 ( $U_p$ ) Voltage Protection Level	$\leq 3.0$ kV	$\leq 4.0$ kV	$\leq 4.2$ kV	6.4 kV
保护模式 Protection Mode	+ —, + — PE, — — PE			
SPD 类型 Type	EN 61643-31 Class I and Class II			

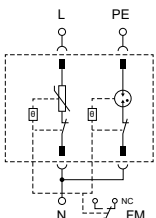
# 产品系列 Product Series

## 交流单相电涌保护器 AC Single-phase SPD

### SD20/30R

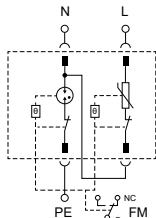


型号 Model	SD20R230L205	SD30R230L205
标称系统电压 ( $U_n$ ) Nominal System Voltage	230 VAC	230 VAC
最大连续工作电压 ( $U_c$ ) Max. Continuous Operating Voltage	385 VAC	385 VAC
标称放电电流 ( $I_n$ ) Nominal Discharge Current (8/20 $\mu$ s)	20 kA	30 kA
最大放电电流 ( $I_{max}$ ) Maximum Discharge Current (8/20 $\mu$ s)	40 kA	60 kA
电压保护水平 ( $U_p$ ) Voltage Protection Level	1.8 kV	2.0 kV
保护模式 Protection Mode	L - PE, N - PE	
SPD 类型 Type	EN 61643-11 Class II	

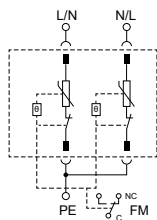


型号 Model	SD20R230A203	SD30R230A203
标称系统电压 ( $U_n$ ) Nominal System Voltage	230 VAC	230 VAC
最大连续工作电压 ( $U_c$ ) Max. Continuous Operating Voltage	L - N: 385 VAC N - PE: 255 VAC	L - N: 385 VAC N - PE: 255 VAC
标称放电电流 ( $I_n$ ) Nominal Discharge Current (8/20 $\mu$ s)	20 kA	30 kA
最大放电电流 ( $I_{max}$ ) Maximum Discharge Current (8/20 $\mu$ s)	40 kA	60 kA
电压保护水平 ( $U_p$ ) Voltage Protection Level	L - N: 1.8 kV N - PE: 1.0 kV	L - N: 2.0 kV N - PE: 1.5 kV
保护模式 Protection Mode	1 + 1 (L - N, N - PE)	
SPD 类型 Type	EN 61643-11 Class II	

### SD20RS



型号 Model	SD20RS230A203
标称系统电压 ( $U_n$ ) Nominal System Voltage	230 VAC
最大连续工作电压 ( $U_c$ ) Max. Continuous Operating Voltage	L - N: 385 VAC; N - PE: 255 VAC
标称放电电流 ( $I_n$ ) Nominal Discharge Current (8/20 $\mu$ s)	20 kA
最大放电电流 ( $I_{max}$ ) Maximum Discharge Current (8/20 $\mu$ s)	40 kA
电压保护水平 ( $U_p$ ) Voltage Protection Level	L - N: 1.8 kV; N - PE: 1.0 kV
保护模式 Protection Mode	1+1 (L-N, N-PE)
SPD 类型 Type	EN 61643-11 Class II



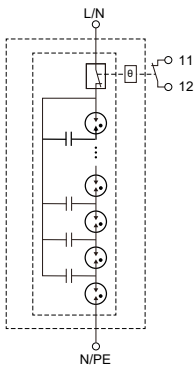
型号 Model	SD20RS230L205
标称系统电压 ( $U_n$ ) Nominal System Voltage	230 VAC
最大连续工作电压 ( $U_c$ ) Max. Continuous Operating Voltage	460 VAC
标称放电电流 ( $I_n$ ) Nominal Discharge Current (8/20 $\mu$ s)	20 kA
最大放电电流 ( $I_{max}$ ) Maximum Discharge Current (8/20 $\mu$ s)	40 kA
电压保护水平 ( $U_p$ ) Voltage Protection Level	2.0 kV
保护模式 Protection Mode	L - PE, N - PE
SPD 类型 Type	EN 61643-11 Class II



# 产品系列 Product Series

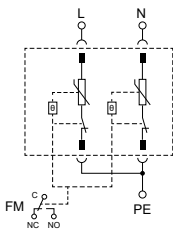
## 交流单相电涌保护器 AC Single-phase SPD

### SD25B



型号 Model	SD25B275D100
标称系统电压 ( $U_n$ ) Nominal System Voltage	240 VAC
最大连续工作电压 ( $U_c$ ) Max. Continuous Operating Voltage	275 VAC
标称放电电流 ( $I_n$ ) Nominal Discharge Current (8/20 $\mu$ s)	30 kA
最大放电电流 ( $I_{max}$ ) Maximum Discharge Current (8/20 $\mu$ s)	60 kA
冲击放电电流 ( $I_{imp}$ ) Impulse Discharge Current (10/350 $\mu$ s)	25 kA
电压保护水平 ( $U_p$ ) Voltage Protection Level	$\leq 2.0$ kV
续流遮断能力 Follow Current Interrupt Rating	50 kA
保护模式 Protection Mode	L-N / N-PE
SPD 类型 Type	EN 61643-11 Class I and Class II

### SD25T



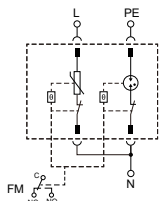
型号 Model	SD25T150L205	SD25T175L205
标称系统电压 ( $U_n$ ) Nominal System Voltage	120 VAC	120 VAC
最大连续工作电压 ( $U_c$ ) Max. Continuous Operating Voltage	150 VAC	175 VAC
标称放电电流 ( $I_n$ ) Nominal Discharge Current (8/20 $\mu$ s)	25 kA	25 kA
最大放电电流 ( $I_{max}$ ) Maximum Discharge Current (8/20 $\mu$ s)	50 kA	50 kA
冲击放电电流 ( $I_{imp}$ ) Impulse Discharge Current (10/350 $\mu$ s)	12.5 kA	12.5 kA
电压保护水平 ( $U_p$ ) Voltage Protection Level	1.0 kV	1.3 kV
保护模式 Protection Mode	L - PE, N - PE	
SPD 类型 Type	EN 61643-11 Class I and Class II	

型号 Model	SD25T275L205	SD25T320L205	SD25T385L205	SD25T440L205	SD25T550L205
标称系统电压 ( $U_n$ ) Nominal System Voltage	230 VAC	230 VAC	230 VAC	345 VAC	480 VAC
最大连续工作电压 ( $U_c$ ) Max. Continuous Operating Voltage	275 VAC	320 VAC	385 VAC	440 VAC	550 VAC
标称放电电流 ( $I_n$ ) Nominal Discharge Current (8/20 $\mu$ s)	25 kA	25 kA	25 kA	25 kA	25 kA
最大放电电流 ( $I_{max}$ ) Maximum Discharge Current (8/20 $\mu$ s)	50 kA	50 kA	50 kA	50 kA	50 kA
冲击放电电流 ( $I_{imp}$ ) Impulse Discharge Current (10/350 $\mu$ s)	12.5 kA	11.0 kA	11 kA	10 kA	7.5 kA
电压保护水平 ( $U_p$ ) Voltage Protection Level	1.5 kV	1.8 kV	2.0 kV	2.1 kV	2.8 kV
保护模式 Protection Mode	L - PE, N - PE				
SPD 类型 Type	EN 61643-11 Class I and Class II				

# 产品系列 Product Series

## 交流单相电涌保护器 AC Single-phase SPD

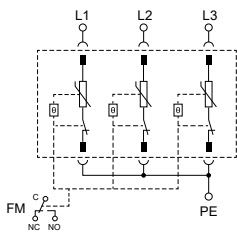
### SD25T



型号 Model	SD25T150A203	SD25T275A203	SD25T320A203	SD25T385A203
标称系统电压 ( $U_n$ ) Nominal System Voltage	120 VAC	230 VAC	230 VAC	230 VAC
最大连续工作电压 ( $U_c$ ) Max. Continuous Operating Voltage	L - N: 150 VAC; N - PE: 255 VAC	L - N: 275 VAC; N - PE: 255 VAC	L - N: 320 VAC; N - PE: 255 VAC	L - N: 385 VAC; N - PE: 255 VAC
标称放电电流 ( $I_n$ ) Nominal Discharge Current (8/20 $\mu$ s)	25 kA	25 kA	25 kA	25 kA
最大放电电流 ( $I_{max}$ ) Maximum Discharge Current (8/20 $\mu$ s)	50 kA	50 kA	50 kA	50 kA
冲击放电电流 ( $I_{imp}$ ) Impulse Discharge Current (10/350 $\mu$ s)	L - N: 12.5 kA N - PE: 12.5 kA	L - N: 12.5 kA N - PE: 12.5 kA	L - N: 11.5 kA N - PE: 12.5 kA	L - N: 11.0 kA N - PE: 12.5 kA
电压保护水平 ( $U_p$ ) Voltage Protection Level	L - N: 1.0 kV; N - PE: 1.5 kV	L - N: 1.5 kV; N - PE: 1.5 kV	L - N: 1.8 kV; N - PE: 1.5 kV	L - N: 2.0 kV; N - PE: 1.5 kV
保护模式 Protection Mode	1 + 1 (L - N, N - PE)			
SPD 类型 Type	EN 61643-11 Class I and Class II			

## 交流三相电涌保护器 AC Three-phase SPD

### SD25T



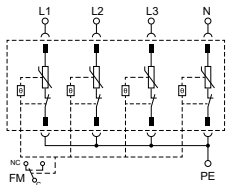
型号 Model	SD25T150L306	SD25T175L306
标称系统电压 ( $U_n$ ) Nominal System Voltage	120 / 208 VAC	120 / 208 VAC
最大连续工作电压 ( $U_c$ ) Max. Continuous Operating Voltage	150 VAC	175 VAC
标称放电电流 ( $I_n$ ) Nominal Discharge Current (8/20 $\mu$ s)	25 kA	25 kA
最大放电电流 ( $I_{max}$ ) Maximum Discharge Current (8/20 $\mu$ s)	50 kA	50 kA
冲击放电电流 ( $I_{imp}$ ) Impulse Discharge Current (10/350 $\mu$ s)	12.5 kA	12.5 kA
电压保护水平 ( $U_p$ ) Voltage Protection Level	1.0 kV	1.3 kV
保护模式 Protection Mode	3 + 0 (L - PE)	
SPD 类型 Type	EN 61643-11 Class I and Class II	

型号 Model	SD25T320L306	SD25T385L306	SD25T440L306	SD25T550L306	SD25T680L306
标称系统电压 ( $U_n$ ) Nominal System Voltage	240 VAC	230 / 400 VAC	277 / 480 VAC	480 VAC	690 VAC
最大连续工作电压 ( $U_c$ ) Max. Continuous Operating Voltage	320 VAC	385 VAC	440 VAC	550 VAC	680 VAC
标称放电电流 ( $I_n$ ) Nominal Discharge Current (8/20 $\mu$ s)	25 kA	25 kA	25 kA	25 kA	25 kA
最大放电电流 ( $I_{max}$ ) Maximum Discharge Current (8/20 $\mu$ s)	50 kA	50 kA	50 kA	50 kA	50 kA
冲击放电电流 ( $I_{imp}$ ) Impulse Discharge Current (10/350 $\mu$ s)	11.5 kA	11.0 kA	10.0 kA	7.5 kA	5.0 kA
电压保护水平 ( $U_p$ ) Voltage Protection Level	1.8 kV	2.0 kV	2.1 kV	2.8 kV	3.2 kV
保护模式 Protection Mode	3 + 0 (L - PE)				
SPD 类型 Type	EN 61643-11 Class I and Class II				

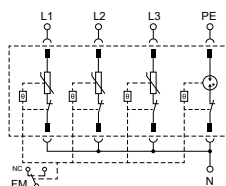
# 产品系列 Product Series

## 交流三相电涌保护器 AC Three-phase SPD

### SD20/30R



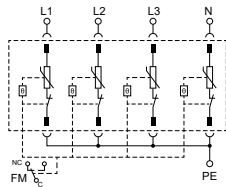
型号 Model	SD20R230L405	SD30R230L405
标称系统电压 ( $U_n$ ) Nominal System Voltage	230 VAC	230 VAC
最大连续工作电压 ( $U_c$ ) Max. Continuous Operating Voltage	385 VAC	385 VAC
标称放电电流 ( $I_n$ ) Nominal Discharge Current (8/20 $\mu$ s)	20 kA	30 kA
最大放电电流 ( $I_{max}$ ) Maximum Discharge Current (8/20 $\mu$ s)	40 kA	60 kA
电压保护水平 ( $U_p$ ) Voltage Protection Level	1.8 kV	2.0 kV
保护模式 Protection Mode	4 + 0 (L - PE, N - PE)	
SPD 类型 Type	EN 61643-11 Class II	



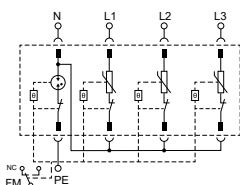
型号 Model	SD20R230A404	SD30R230A404
标称系统电压 ( $U_n$ ) Nominal System Voltage	230 VAC	230 VAC
最大连续工作电压 ( $U_c$ ) Max. Continuous Operating Voltage	L - N: 385 VAC N - PE: 255 VAC	L - N: 385 VAC N - PE: 255 VAC
标称放电电流 ( $I_n$ ) Nominal Discharge Current (8/20 $\mu$ s)	20 kA	30 kA
最大放电电流 ( $I_{max}$ ) Maximum Discharge Current (8/20 $\mu$ s)	40 kA	60 kA
电压保护水平 ( $U_p$ ) Voltage Protection Level	L - N: 1.8 kV N - PE: 1.0 kV	L - N: 2.0 kV N - PE: 1.5 kV
保护模式 Protection Mode	3 + 1 (L - N, N - PE)	
SPD 类型 Type	EN 61643-11 Class II	

备注：其他电压规格产品可根据客户需求定制  
Note: Other voltage rating can be customized

### SD20RS



型号 Model	SD20RS230L405
标称系统电压 ( $U_n$ ) Nominal System Voltage	230 VAC
最大连续工作电压 ( $U_c$ ) Max. Continuous Operating Voltage	460 VAC
标称放电电流 ( $I_n$ ) Nominal Discharge Current (8/20 $\mu$ s)	20 kA
最大放电电流 ( $I_{max}$ ) Maximum Discharge Current (8/20 $\mu$ s)	40 kA
电压保护水平 ( $U_p$ ) Voltage Protection Level	2.0 kV
保护模式 Protection Mode	4 + 0 (L - PE, N - PE)
SPD 类型 Type	EN 61643-11 Class II

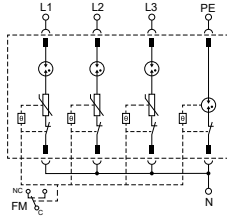


型号 Model	SD20RS230A404
标称系统电压 ( $U_n$ ) Nominal System Voltage	230 VAC
最大连续工作电压 ( $U_c$ ) Max. Continuous Operating Voltage	L - N: 385 VAC; N - PE: 255 VAC
标称放电电流 ( $I_n$ ) Nominal Discharge Current (8/20 $\mu$ s)	20 kA
最大放电电流 ( $I_{max}$ ) Maximum Discharge Current (8/20 $\mu$ s)	40 kA
电压保护水平 ( $U_p$ ) Voltage Protection Level	L - N: 1.8 kV; N - PE: 1.0 kV
保护模式 Protection Mode	3 + 1 (L - N, N - PE)
SPD 类型 Type	EN 61643-11 Class II

# 产品系列 Product Series

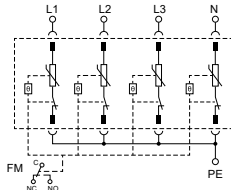
## 交流三相电涌保护器 AC Three-phase SPD

### SD20H



型号 Model	SD20H230A404
标称系统电压 ( $U_n$ ) Nominal System Voltage	230 VAC
最大连续工作电压 ( $U_c$ ) Max. Continuous Operating Voltage	L - N: 275 VAC; N - PE: 255 VAC
标称放电电流 ( $I_n$ ) Nominal Discharge Current (8/20 $\mu$ s)	20 kA
最大放电电流 ( $I_{max}$ ) Maximum Discharge Current (8/20 $\mu$ s)	40 kA
电压保护水平 ( $U_p$ ) Voltage Protection Level	1.0 kV
保护模式 Protection Mode	3 + 1 (L - N, N - PE)
SPD 类型 Type	EN 61643-11 Class II

### SD25T



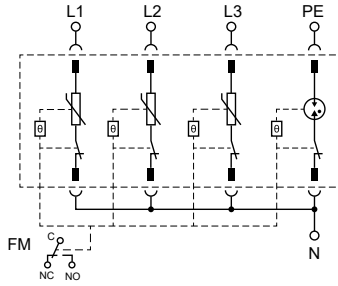
型号 Model	SD25T150L405	SD25T175L405
标称系统电压 ( $U_n$ ) Nominal System Voltage	120/208 VAC	120/208 VAC
最大连续工作电压 ( $U_c$ ) Max. Continuous Operating Voltage	150 VAC	175 VAC
标称放电电流 ( $I_n$ ) Nominal Discharge Current (8/20 $\mu$ s)	25 kA	25 kA
最大放电电流 ( $I_{max}$ ) Maximum Discharge Current (8/20 $\mu$ s)	50 kA	50 kA
冲击放电电流 ( $I_{imp}$ ) Impulse Discharge Current (10/350 $\mu$ s)	12.5 kA	12.5 kA
电压保护水平 ( $U_p$ ) Voltage Protection Level	1.0 kV	1.3 kV
保护模式 Protection Mode	4 + 0 (L - PE, N - PE)	
SPD 类型 Type	EN 61643-11 Class I and Class II	

型号 Model	SD25T275L405	SD25T320L405	SD25T385L405	SD25T440L405	SD25T550L405
标称系统电压 ( $U_n$ ) Nominal System Voltage	230 / 380 VAC	230 / 400 VAC	277 / 480 VAC	277 / 480 VAC	400 / 690 VAC
最大连续工作电压 ( $U_c$ ) Max. Continuous Operating Voltage	275 VAC	320 VAC	385 VAC	440 VAC	550 VAC
标称放电电流 ( $I_n$ ) Nominal Discharge Current (8/20 $\mu$ s)	25 kA	25 kA	25 kA	25 kA	25 kA
最大放电电流 ( $I_{max}$ ) Maximum Discharge Current (8/20 $\mu$ s)	50 kA	50 kA	50 kA	50 kA	50 kA
冲击放电电流 ( $I_{imp}$ ) Impulse Discharge Current (10/350 $\mu$ s)	12.5 kA	11.5 kA	11.0 kA	10.0 kA	7.5 kA
电压保护水平 ( $U_p$ ) Voltage Protection Level	1.5 kV	1.8 kV	2.0 kV	2.1 kV	2.8 kV
保护模式 Protection Mode	4 + 0 (L - PE, N - PE)				
SPD 类型 Type	EN 61643-11 Class I and Class II				

# 产品系列 Product Series

## 交流三相电涌保护器 AC Three-phase SPD

### SD25T

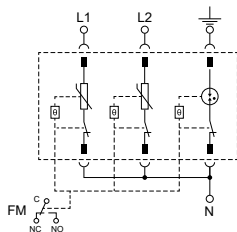


型号 Model	SD25T150A404	SD25T175A404	SD25T275A404	SD25T320A404	SD25T385A404
标称系统电压 ( $U_n$ ) Nominal System Voltage	120 / 208 VAC	120 / 208 VAC	230 / 380 VAC	230 / 400 VAC	230 / 400 VAC
最大连续工作电压 ( $U_c$ ) Max. Continuous Operating Voltage	L - N: 150 VAC; N - PE: 255 VAC	L - N: 175 VAC; N - PE: 255 VAC	L - N: 275 VAC; N - PE: 255 VAC	L - N: 320 VAC; N - PE: 255 VAC	L - N: 385 VAC; N - PE: 255 VAC
标称放电电流 ( $I_n$ ) Nominal Discharge Current (8/20 $\mu$ s)	25 kA	25 kA	25 kA	25 kA	25 kA
最大放电电流 ( $I_{max}$ ) Maximum Discharge Current (8/20 $\mu$ s)	50 kA	50 kA	50 kA	50 kA	50 kA
冲击放电电流 ( $I_{imp}$ ) Impulse Discharge Current (10/350 $\mu$ s)	L - N: 12.5 kA N - PE: 12.5 kA	L - N: 12.5 kA N - PE: 12.5 kA	L - N: 12.5 kA N - PE: 12.5 kA	L - N: 11.5 kA N - PE: 12.5 kA	L - N: 11.0 kA N - PE: 12.5 kA
电压保护水平 ( $U_p$ ) Voltage Protection Level	L - N: 1.0 kV; N - PE: 1.5 kV	L - N: 1.3 kV; N - PE: 1.5 kV	L - N: 1.5 kV; N - PE: 1.5 kV	L - N: 1.8 kV; N - PE: 1.5 kV	L - N: 2.0 kV; N - PE: 1.5 kV
保护模式 Protection Mode	3 + 1 (L - N, N - PE)				
SPD 类型 Type	EN 61643-11 Class I and Class II				

# 产品系列 Product Series

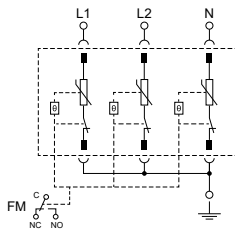
## 分相系统电涌保护器 Split-phase system SPD

### SD25T



型号 Model	SD25T150A301	SD25T175A301	SD25T385A301
标称系统电压 ( $U_n$ ) Nominal System Voltage	120 / 240 VAC	120 / 240 VAC	240 / 480 VAC
最大连续工作电压 ( $U_c$ ) Max. Continuous Operating Voltage	L1/L2-N: 150 VAC; N-PE: 255 VAC	L1/L2-N: 175 VAC; N-PE: 255 VAC	L1/L2-N: 385 VAC; N-PE: 255 VAC
标称放电电流 ( $I_n$ ) Nominal Discharge Current (8/20 $\mu$ s)	25 kA	25 kA	25 kA
最大放电电流 ( $I_{max}$ ) Maximum Discharge Current (8/20 $\mu$ s)	50 kA	50 kA	50 kA
冲击放电电流 ( $I_{imp}$ ) Impulse Discharge Current (10/350 $\mu$ s)	12.5 kA	12.5 kA	11.0 kA
电压保护水平 ( $U_p$ ) Voltage Protection Level	L1/L2-N: 1.0 kV; N-PE: 1.5 kV	L1/L2-N: 1.3 kV; N-PE: 1.5 kV	L1/L2-N: 2.0 kV; N-PE: 1.5 kV
保护模式 Protection Mode		L - N, N - PE	
SPD 类型 Type		UL 1449 Type 4CA	

### SD25T

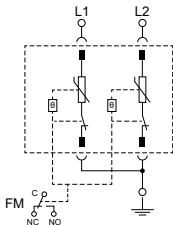


型号 Model	SD25T150L302	SD25T175L302	SD25T385L302
标称系统电压 ( $U_n$ ) Nominal System Voltage	120 / 240 VAC	120 / 240 VAC	240 / 480 VAC
最大连续工作电压 ( $U_c$ ) Max. Continuous Operating Voltage	150 VAC	175 VAC	385 VAC
标称放电电流 ( $I_n$ ) Nominal Discharge Current (8/20 $\mu$ s)	25 kA	25 kA	25 kA
最大放电电流 ( $I_{max}$ ) Maximum Discharge Current (8/20 $\mu$ s)	50 kA	50 kA	50 kA
冲击放电电流 ( $I_{imp}$ ) Impulse Discharge Current (10/350 $\mu$ s)	12.5 kA	12.5 kA	11.0 kA
电压保护水平 ( $U_p$ ) Voltage Protection Level	1.0 kV	1.3 kV	2.0 kV
保护模式 Protection Mode		L - PE, N - PE	
SPD 类型 Type		UL 1449 Type 4CA	

# 产品系列 Product Series

## 分相系统电涌保护器 Split-phase system SPD

### SD25T



型号 Model	SD25T150L201	SD25T175L201	SD25T320L201
标称系统电压 ( $U_n$ ) Nominal System Voltage	120 / 240 VAC	120 / 240 VAC	240 / 480 VAC
最大连续工作电压 ( $U_c$ ) Max. Continuous Operating Voltage	150 VAC	175 VAC	320 VAC
标称放电电流 ( $I_n$ ) Nominal Discharge Current (8/20 $\mu$ s)	25 kA	25 kA	25 kA
最大放电电流 ( $I_{max}$ ) Maximum Discharge Current (8/20 $\mu$ s)	50 kA	50 kA	50 kA
冲击放电电流 ( $I_{imp}$ ) Impulse Discharge Current (10/350 $\mu$ s)	12.5 kA	12.5 kA	11.5 kA
电压保护水平 ( $U_p$ ) Voltage Protection Level	1.0 kV	1.3 kV	1.8 kV
保护模式 Protection Mode		L - PE	
SPD 类型 Type		UL 1449 Type 4CA	

[www.SETsafe.com](http://www.SETsafe.com)  
[www.SETfuse.com](http://www.SETfuse.com)

20+

OVER 20 YEARS OF DESIGNING, MANUFACTURING  
AND SELLING OF CIRCUIT PROTECTION COMPONENTS  
超过20年的设计、制造、销售电路保护元器件

40+

SOLD TO MORE THAN 40 COUNTRIES AND REGIONS  
40多个国家和地区的客户选择赛尔特品牌

自动化

AUTOMATIC PROCESS PRODUCTION  
自动化工序生产

500

A BRAND CHOSEN BY FORTUNE 500 COMPANIES  
世界500强企业选择品牌



厦门火炬高新区（翔安）产业区翔安西路8067, 8001号  
NO. 8067, 8001 West Xiang'an Road, Torch High-Tech  
Industrial District, Xiang'an 361101 Xiamen P.R. China  
[www.SETsafe.com](http://www.SETsafe.com) [www.SETfuse.com](http://www.SETfuse.com)  
+86 592-5715-838 [sales@SETfuse.com](mailto:sales@SETfuse.com)

厦门赛尔特电子有限公司版权所有  
All Rights Reserved by Xiamen SET Electronics Co., Ltd.  
更新 Update: Jun 2, 2022

*SETsafe* | *SETfuse*  
**赛尔特**